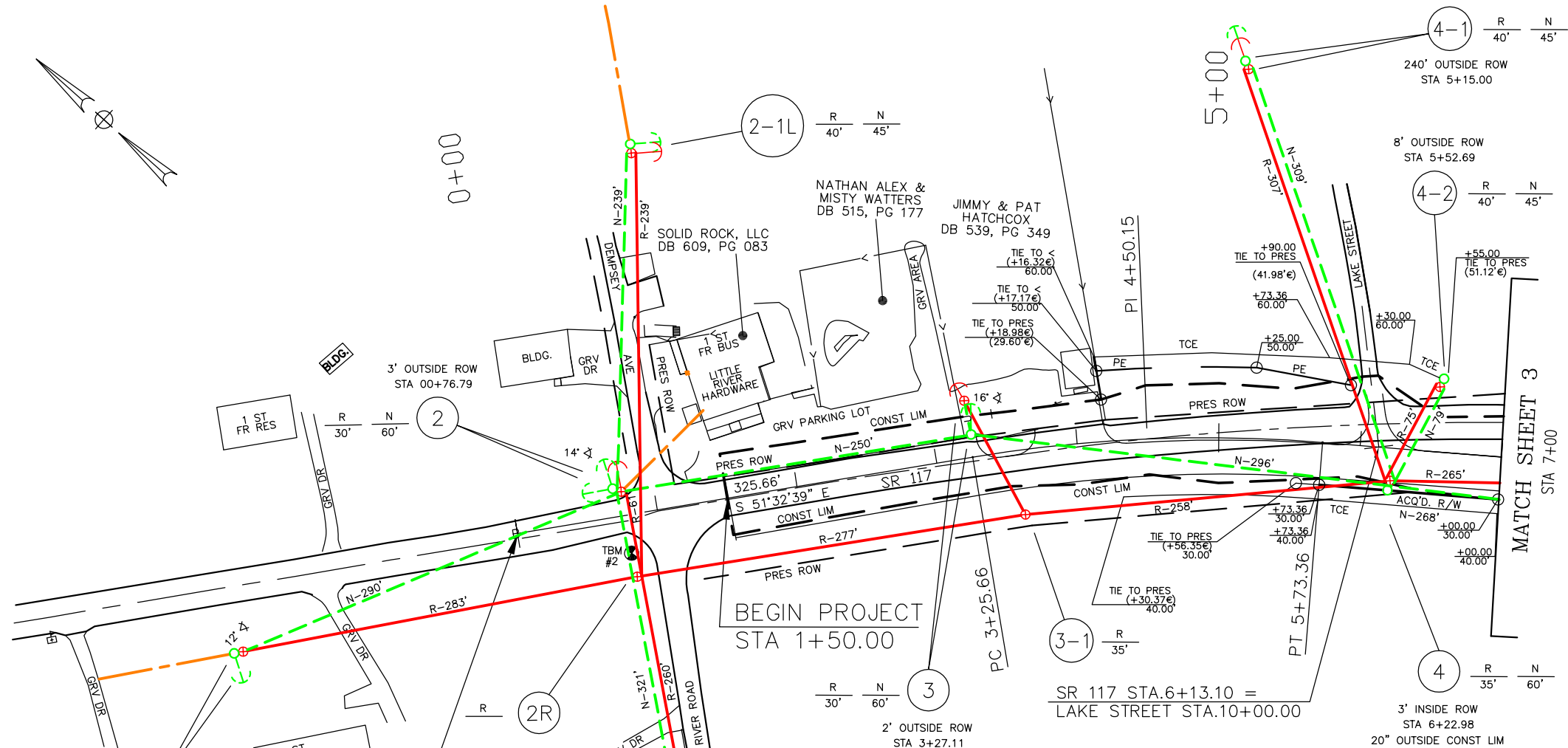
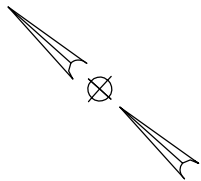


SAND MOUNTAIN ELECTRIC COOPERATIVE RAINSVILLE, ALABAMA			
ELECTRIC UTILITY RELOCATION PLANS FOR <b>ALDOT PROJECT BR-0117 (501)</b> REPLACE BIN 000543 STATE ROUTE 117 OVER WEST FORK OF LITTLE RIVER			
PATTERSON & DEWAR ENGINEERS INC.		NORCROSS, GEORGIA	
DATE: 01-10-14	DWN. BY: R.P.	TRACED BY: M.L.M.	SHEET 1 OF 4
SCALE: NTS	CKD. BY: R.P.	W.O. ?	file: AL36-BR0117-1



**LEGEND**

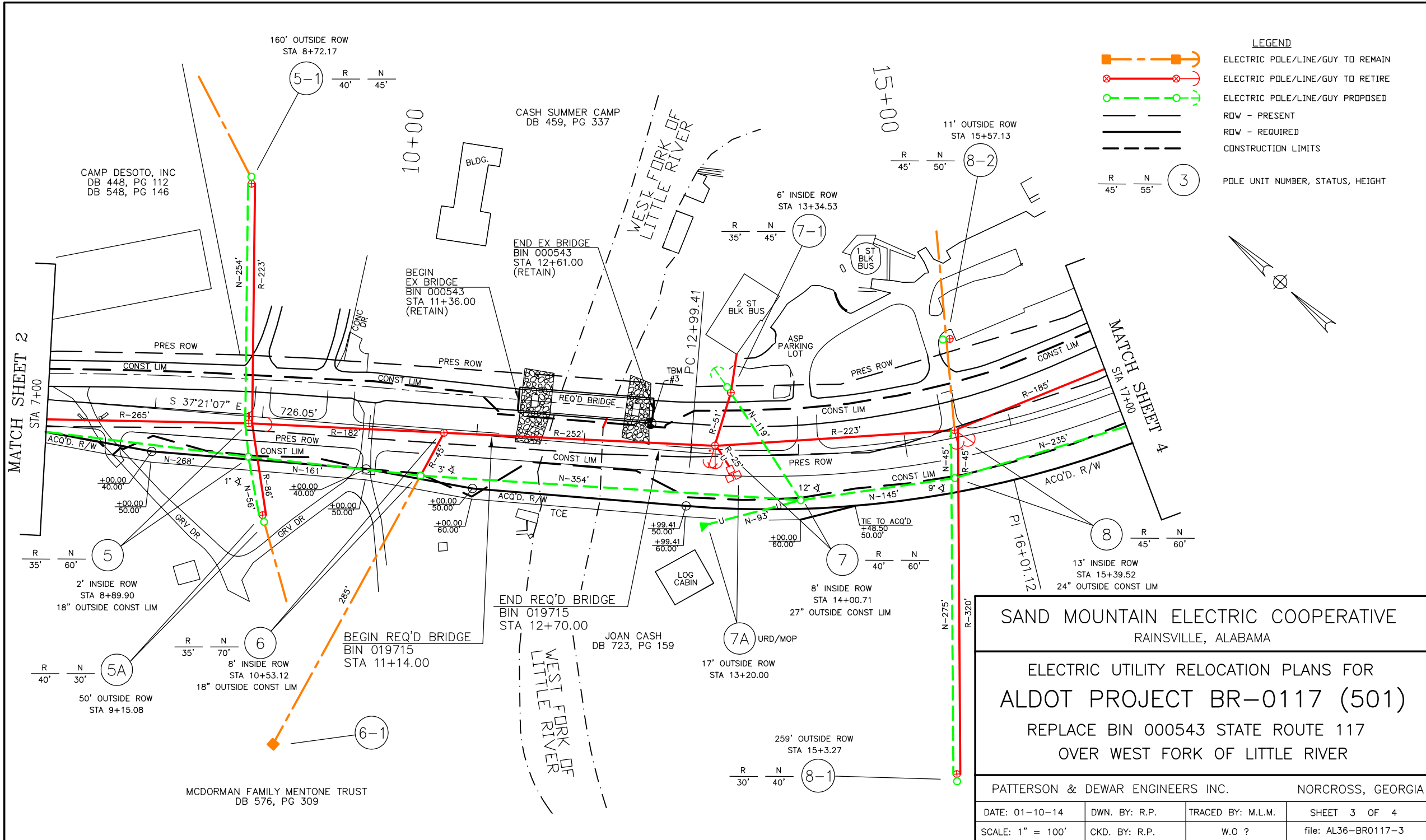
	ELECTRIC POLE/LINE/GUY TO REMAIN
	ELECTRIC POLE/LINE/GUY TO RETIRE
	ELECTRIC POLE/LINE/GUY PROPOSED
	RDW - PRESENT
	RDW - REQUIRED
	CONSTRUCTION LIMITS
	POLE UNIT NUMBER, STATUS, HEIGHT

**SAND MOUNTAIN ELECTRIC COOPERATIVE**  
RAINSVILLE, ALABAMA

**ELECTRIC UTILITY RELOCATION PLANS FOR**  
**ALDOT PROJECT BR-0117 (501)**  
REPLACE BIN 000543 STATE ROUTE 117  
OVER WEST FORK OF LITTLE RIVER

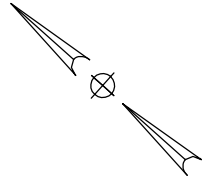
PATTERSON & DEWAR ENGINEERS INC. NORCROSS, GEORGIA

DATE: 01-10-14	DWN. BY: R.P.	TRACED BY: M.L.M.	SHEET 2 OF 4
SCALE: 1" = 100'	CKD. BY: R.P.	W.O. ?	file: AL36-BR0117-2



**LEGEND**

- ELECTRIC POLE/LINE/GUY TO REMAIN
- ELECTRIC POLE/LINE/GUY TO RETIRE
- ELECTRIC POLE/LINE/GUY PROPOSED
- ROW - PRESENT
- ROW - REQUIRED
- CONSTRUCTION LIMITS
- POLE UNIT NUMBER, STATUS, HEIGHT



**SAND MOUNTAIN ELECTRIC COOPERATIVE**  
RAINSVILLE, ALABAMA

**ELECTRIC UTILITY RELOCATION PLANS FOR  
ALDOT PROJECT BR-0117 (501)  
REPLACE BIN 000543 STATE ROUTE 117  
OVER WEST FORK OF LITTLE RIVER**

PATTERSON & DEWAR ENGINEERS INC. NORCROSS, GEORGIA

DATE: 01-10-14	DWN. BY: R.P.	TRACED BY: M.L.M.	SHEET 3 OF 4
SCALE: 1" = 100'	CKD. BY: R.P.	W.O. ?	file: AL36-BR0117-3

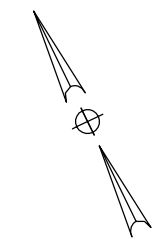
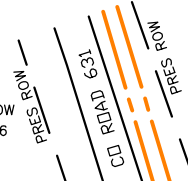
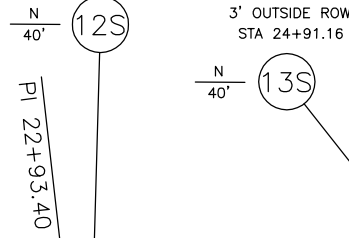
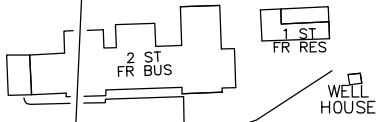
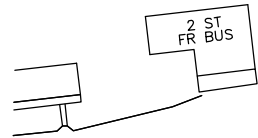
MATCH SHEET 3  
STA 17+00

EDWARD A CASH  
C/O CAMP SKYLINE  
DB 468, PG 329

2' INSIDE ROW  
STA 19+38.65

2' OUTSIDE ROW  
STA 23+5.83

SR 117 STA.25+35.69 =  
CO ROAD 631 STA.10+00.00



ASP PARKING LOT

PRES ROW

PRES ROW  
CONST LIM

PRES ROW

PRES ROW

PRES ROW

END WORK  
STA 27+00.00

END PROJECT  
STA 26+00.00

14 R 35' N 55'  
1' INSIDE ROW  
STA 26+83.54

SR 117

SR 117

50' PRIVATE CLUB RIGHT-OF-WAY

GRIT DR

9 R 40' N 55'  
9' INSIDE ROW  
STA 17+65.14  
11'-3" OUTSIDE CONST LIM

10 R 40' N 55'  
9' INSIDE ROW  
STA 19+95.08  
24" OUTSIDE CONST LIM

12 R 35' N 55'  
6' INSIDE ROW  
STA 23+6.90  
18" OUTSIDE CONST LIM

13 R 40' N 55'  
12' INSIDE ROW  
STA 24+93.82

LOT 1  
CHARLES SHEPARD MIDGLEY  
DB 532, PG 198

SAND MOUNTAIN ELECTRIC COOPERATIVE  
RAINSVILLE, ALABAMA

ELECTRIC UTILITY RELOCATION PLANS FOR  
ALDOT PROJECT BR-0117 (501)  
REPLACE BIN 000543 STATE ROUTE 117  
OVER WEST FORK OF LITTLE RIVER

PATTERSON & DEWAR ENGINEERS INC. NORCROSS, GEORGIA

DATE: 01-10-14	DWN. BY: R.P.	TRACED BY: M.L.M.	SHEET 4 OF 4
SCALE: 1" = 100'	CKD. BY: R.P.	W.O. ?	file: AL36-BR0117-4

**LEGEND**

- ELECTRIC POLE/LINE/GUY TO REMAIN
- ELECTRIC POLE/LINE/GUY TO RETIRE
- ELECTRIC POLE/LINE/GUY PROPOSED
- ROW - PRESENT
- ROW - REQUIRED
- CONSTRUCTION LIMITS
- POLE UNIT NUMBER, STATUS, HEIGHT

MOON LAKE CLUB INC  
C/O MIDGLEY SHEPARD  
(228 CLAREMONT DRIVE  
GADSDEN, AL 35901)  
DB 98, PG 558-561